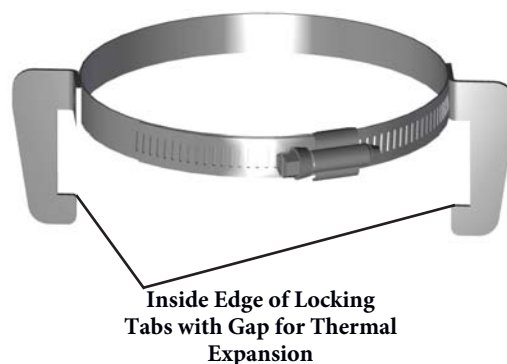


Z-DENS UNIQUE Locking Clamp - BAND is designed to provide a secure connection with TWO LOCKING TABS and allowance for THERMAL EXPANSION - saving installation time & money!

Locking Clamp - BAND Design Features:

- Available for all Z-DENS diameters; installs snug on male end of pipe or fitting
- Includes 2 locking tabs for a secure connection
- Incorporates a thermal expansion allowance between the inside edge of locking tabs and the gasket extrusion
- Clamp comes preassembled to ease installation and save time



Z-DENS Locking Clamp - BAND Installation Instructions:

- To ease assembly of pipes and fittings it is recommended to use Z-DENS Gasket Lubricant.
- Insert male end of pipe or fitting through locking clamp with locking tabs facing male end of pipe & female socket of mating pipe as shown in figure 1.1.
- Insert male end of pipe or fitting with locking clamp in female socket bottoming out male end inside female socket as shown in figure 1.2.
- Slide locking clamp down male end of pipe or fitting until bottom of band rest on top of female socket and both locking tabs are below gasket extrusion of female socket as shown in figure 1.3.
- Tighten gear on locking clamp until clamp fits snug without slipping on male end of pipe (5.9 ftlb or 8Nm).
- While holding female socket, pull/slide male end out until inside edge of locking tabs on clamp touch bottom of gasket extrusion on female socket as shown in figure 1.4; this is the allowance for thermal expansion.



Figure 1.1



Figure 1.2



Figure 1.3

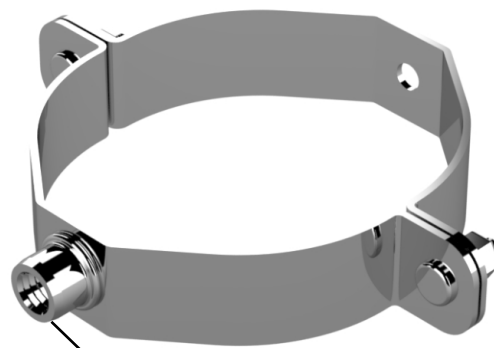


Figure 1.4

Z-DENS UNIQUE Fixing Bracket is designed to support pipes while allowing for thermal expansion.

Fixing Bracket Design Features:

- Available for all Z-DENS diameters; installs loose on male end of pipe allowing room for thermal expansion
- $\frac{3}{8}$ " - 16 threaded connection for field supplied $\frac{3}{8}$ " threaded rod or lag stud
- Two halves of clamp come preassembled reducing installation time

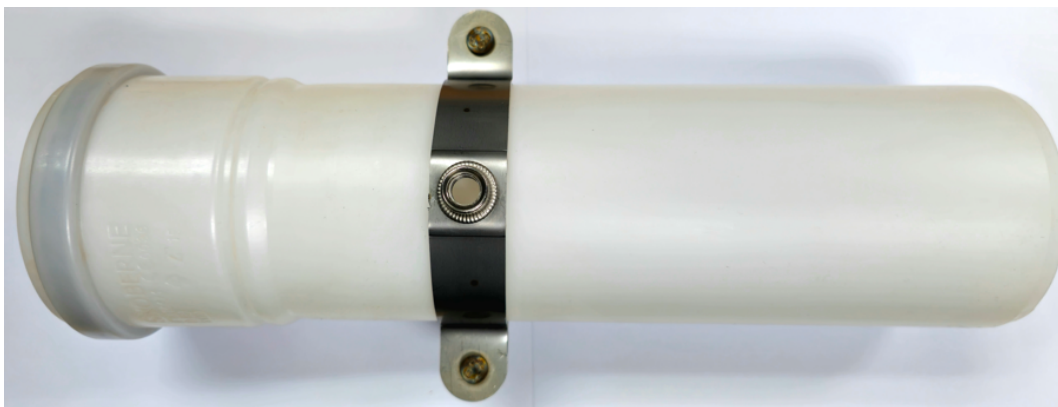


$\frac{3}{8}$ " - 16 Threaded Connection for $\frac{3}{8}$ " Threaded Rod or Lag Stud

Threaded rod can be attached to building using wall bracket, anchor rod or slide nut and strut channel.

Z-DENS Fixing Bracket Installation Instructions:

- Fixing brackets comes preassembled for quick installation.
- Insert male end of pipe through fixing bracket. Fixing bracket will fit loose around male end of pipe to allow for thermal expansion.
- Attach field supplied $\frac{3}{8}$ " threaded rod or lag stud to fixing bracket and building.
Threaded rod can be attached to building using field supplied wall bracket, anchor rod or slide nut and strut channel.



The information provided within is for informational purposes only. We have made every effort to ensure the accuracy of the provided information and assume no responsibility for any loss or damage due to errors or omissions or to the use or misuse of any information supplied. It is impossible to test all products under all conditions to which they might be subjected in the field. It is therefore the buyer and/or end users' responsibility to test all products under the conditions that duplicate the service conditions prior to installation. All improvements, all specifications are subject to change without prior notice. It is the buyer and/or end users' responsibility to review our complete Terms and Conditions of Sale located on our web sites at: www.novaflex.com | www.z-flex.com | www.flexmaster.com.